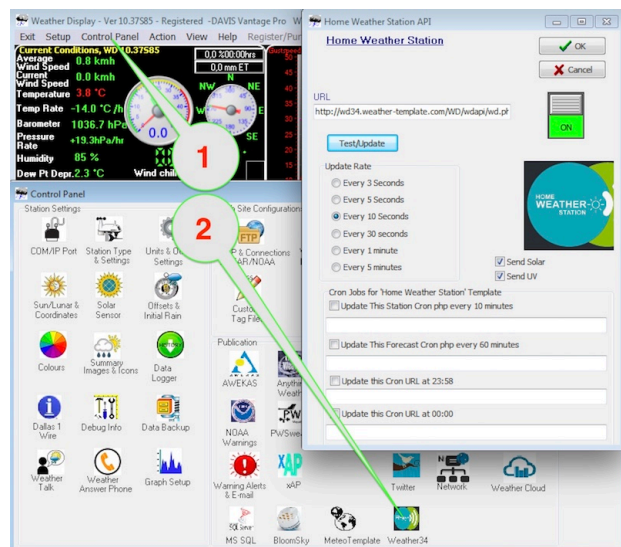


How to upload your WeatherDisplay-data using the HomeWeatherStation-API

Check first !

To use the api (lets call it **WDapi** for short) a special weather34 icon should be visible in WD control panel. If it is not visible please update to a recent WeatherDisplay version!



Then

1. Click control panel
2. Click on the weather34 logo

The screen will then show the entry form as on the right of the screenshot.

We now will tell WD what the location is of our weather34 script folder.

As always we will assume that you installed the pwsWD/ folder in the root of your website.

1. URL

At the box called URL you should type the location and the name of the script on your server which will receive the WDapi weather-data: **w34_WDapi.php**

You have to type the complete URL

https://www.yoursite.com/pwsWD/w34_WDapi.php

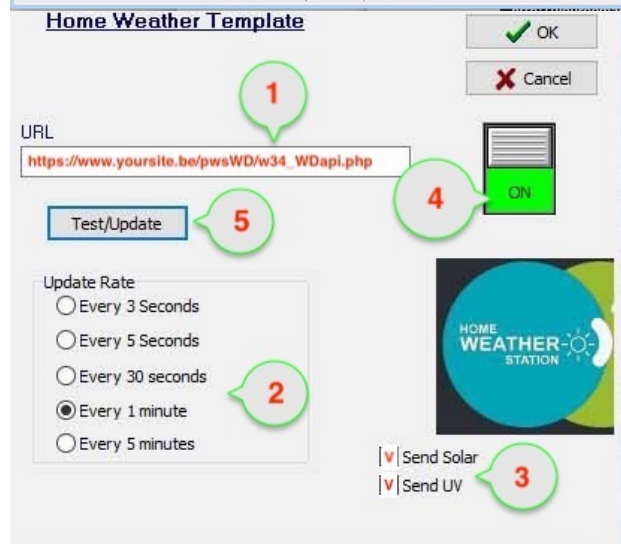
The script has a new name compared to the old 2017 version, just to make sure that we use the correct script.

2. Frequency

Do not set the frequency to high as it will easily overload free or less expensive hosting contracts.

3. UV / Solar

If your station has these sensors, select the upload of the measurements here also



4. Select ON

Set the slider to ON, and check if it is green

5. Test

When clicking on this button you should get a message which should start with "**Success**"

That means that the script at your server has accepted the message.

It **can** also contains (error)messages if, in your easyweather settings, the script is set to update the database

6. IMPORTANT

Click on the OK button and check after a few minutes if the data is uploaded.

It should arrive in www.yoursite.com/jsondata/WDapi.txt

When all is OK and the new data is shown in your weather-screen, you can set a cron-job to speed up data loading.